



Safety is for life.™

EGV HYP
for low
vacuum.

NEW:
Gasket
optionally
available in
contrasting
blue.

Reliable. German.
Safety.

Applications

EGV HYP was specially developed for demanding hygienic applications in the food and pharmaceutical industries. It is frequently used in critical plants to protect spray dryers, filters or fluid bed dryers. This has been confirmed, among others, by the **EHEDG Cleanability Test**.

Special feature: The patented, full surface, tapered sealing system fits flush with the interior of the explosion vent and **prevents cross contamination**. The explosion vent can also be pre-bent to round vessel shapes.

Mechanism

When pressure rises, the explosion vent opens at the defined breaking point and releases pressure out of the vessel into the surrounding area.

Advantages

- ✓ Hygienic design ensures consistently **high product quality**.
- ✓ **Protects from cross contamination** upon change of product.
- ✓ Allows **CIP cleaning**.
- ✓ **Longer lifetime** of explosion vent under extreme temperatures and strain from pressure alternations – thanks to integrated bionic structure.
- ✓ **Reduced noise emissions** (e.g. through knockers) on discharge channels.

Visit rembe.de for detailed information and your personal contact.

REMBE® GmbH Safety+Control

Gallbergweg 21 | 59929 Brilon, Germany | T +49 2961 7405-0
hello@rembe.de

Technical data *

Standard burst pressure P_{stat}	0,1 bar
Max. permitted operating pressure	50 % of P_{stat}
Temperature	-40 to +180°C (-40 to +356 °F)
Material	Stainless steel
Gasket material	Full-scale silicon seal (FDA licensed, BfR recommendations (on Food Contact Materials) and regulation (EC) No 1935/2004)
Tolerance	± 20 % at standard burst pressure
Process	Non-pulsating
Recommended torque for M10 screws	15 – 20 Nm

*Our specialists will be pleased to assist you in finding a solution that matches your specific operating conditions.

Certification



ATEX
EU-type examination
certificate no.
FSA 04 ATEX 1538 X

SIL equivalent

SIL 4

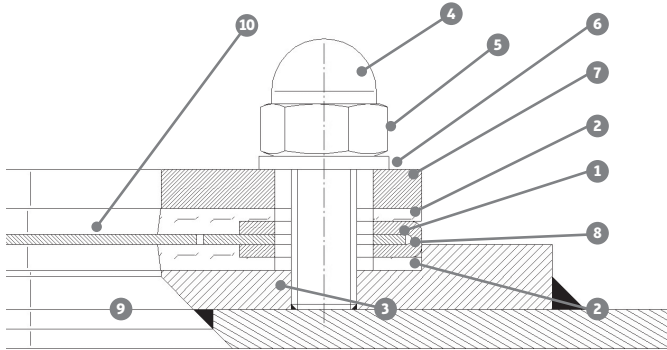


Certified in accordance
with EHEDG

REMBE® Sustainability: Not only do we provide professional safety for your plant and machinery and protect human life, but our products also avoid harmful emissions sustainably eliminate leaks and/or reduce noise pollution. You can find more information on sustainability at rembe-green.de.

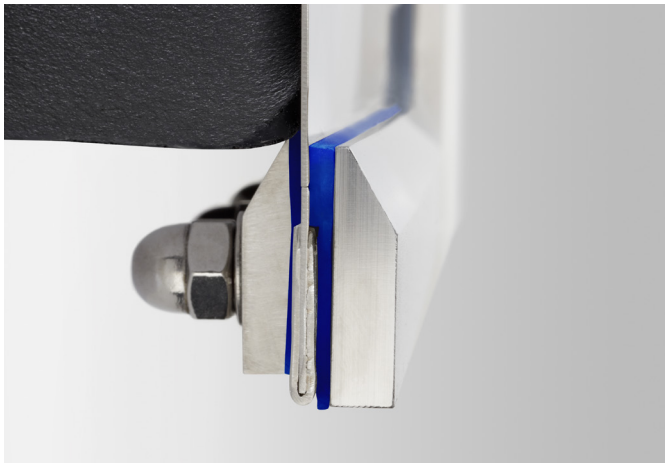


Safety is for life.™

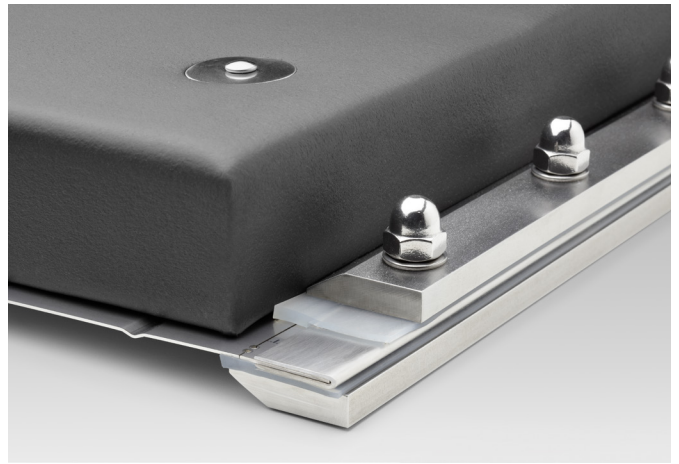


- 1 Explosion vent (burst element, integrated gasket and integrated frame)
- 2 Integrated silicon gasket
- 3 Vessel wall
- 4 Threaded bolt
- 5 Nut
- 6 Washer
- 7 Counter frame
- 8 Integrated frame
- 9 Opening
- 10 Burst element

Installation with welded threaded bolts.



The specially developed sealing system prevents product deposits. Gasket optionally available in contrasting blue.



The outside is insulated to prevent condensation-related product build-up.

Standard dimensions

Max. size of wall opening – nominal vent dimensions [mm]	Effective venting area [cm ²]
305 x 610	1860
490 x 590	2890
586 x 920	5400
610 x 1118	6800
920 x 920	8500
915 x 1118	10230
1000 x 1000	10000
1020 x 1020	10400

Other dimensions available on request.

Visit rembe.de for detailed information and your personal contact.

REMBE® GmbH Safety+Control

Gallbergweg 21 | 59929 Brilon, Germany | T +49 2961 7405-0
hello@rembe.de

REMBE® Sustainability: Not only do we provide professional safety for your plant and machinery and protect human life, but our products also avoid harmful emissions sustainably eliminate leaks and/or reduce noise pollution. You can find more information on sustainability at rembe-green.de.